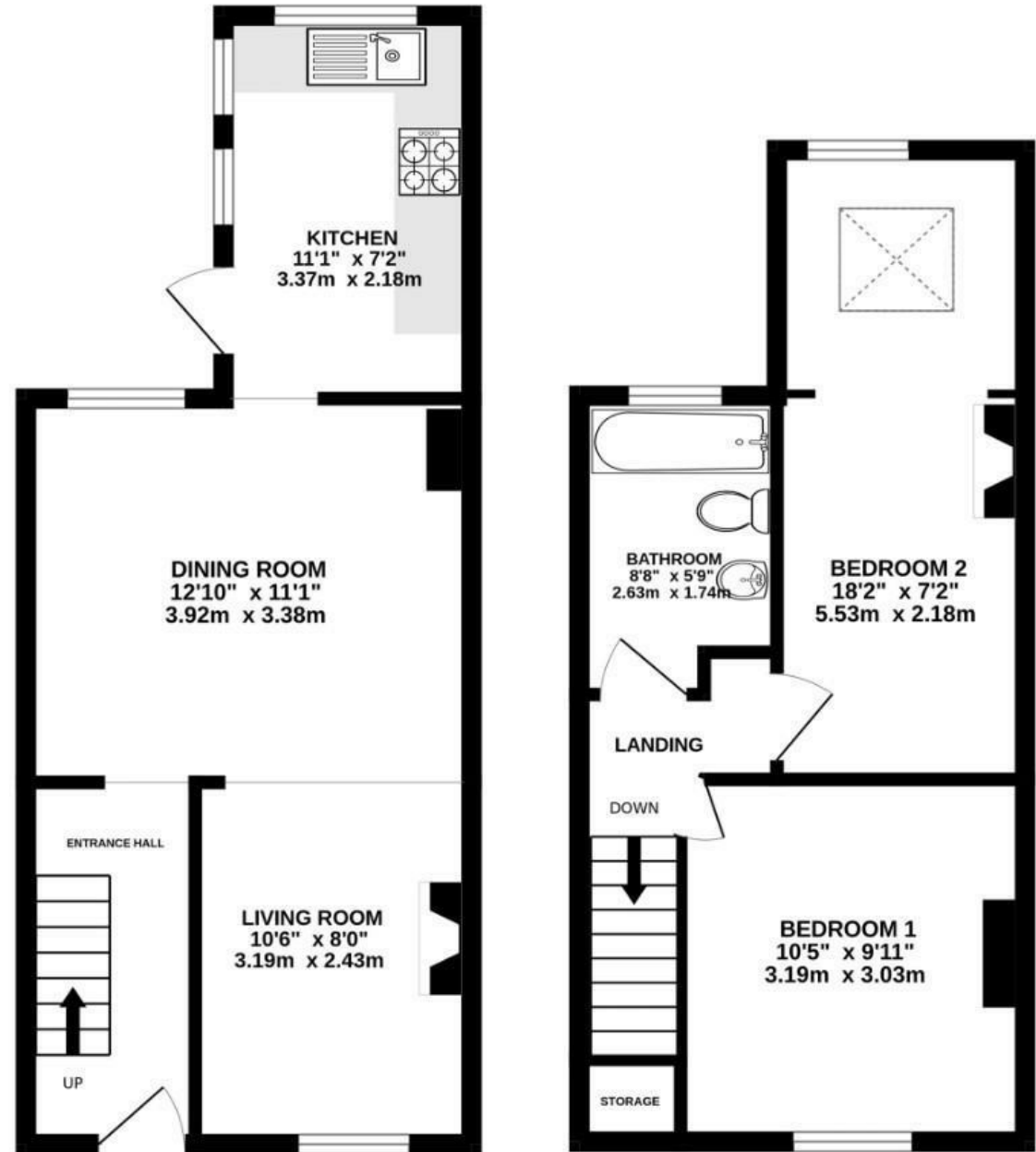


North Road

ASHTON GATE

APPROXIMATE FLOOR AREA
66.0 SQM / 710 SQFT



Illustrations are for reference purposes only, measurements are approximate, not to scale.

Boardwalk

North Road

ASHTON GATE, BRISTOL

£

£365,000

zzz

2 Bedrooms



BS3 2EE



1 Bathrooms

“North Road has been a great rental investment for us and all the tenants have loved the location so close to Greville Smyth Park, Ashton Court and the shops and cafes on North Street. Marks bakery is a great spot for cinnamon buns, bread and excellent coffee and the Tobacco Factory for evening drinks and theatre shows”

